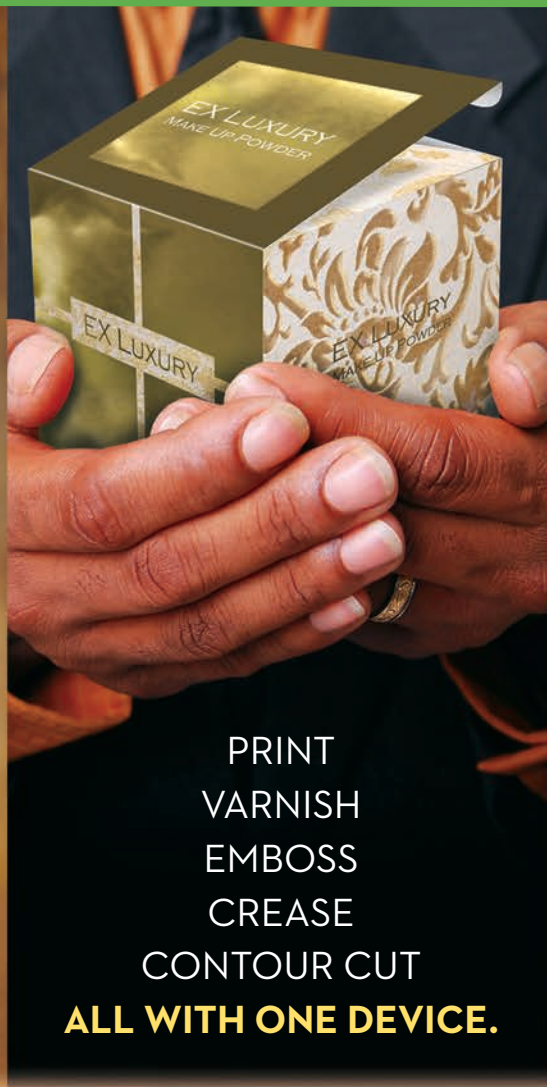




VERSAUV® LEC SERIES

VERSAUV LEC-540 UV INKJET PRINTER/CUTTER  
VERSAUV LEC-330 UV INKJET PRINTER/CUTTER



PRINT  
VARNISH  
EMBOSS  
CREASE  
CONTOUR CUT  
**ALL WITH ONE DEVICE.**



 Roland®







## Imagine everything you need for prototypes, proofs, and short-run label printing...all in one package.

Take one look at a finished print and the innovation is clear. This is unlike any other inkjet printer you've ever seen. And it's going to change the way you go about your day-to-day business.

Across a vast range of substrates – from roll stock to card stock to heat sealable bag material and metallics – the VersaUV prints CMYK plus White Ink plus Clear Coat at resolutions up to 1440 dpi. It automatically scores and contour cuts virtually any size and shape for unmatched versatility. It's ideal for proofs, packaging prototypes, label and specialized short run production. You can even open up new revenue streams by printing custom posters, POP displays, wallpaper and specialized product wraps. Powered by Roland Intelligent Pass Control® technology, the VersaUV delivers vibrant, detailed image quality in all print modes with virtually no signs of banding. White Eco-UV ink creates crisp, flawless graphics and text and can be used as an undercoat to enhance the brightness of prints. Eco-UV Clear Coat adds remarkably rich special effects ranging from high-gloss finishes for area highlights to custom texturing and embossing.

“When we print our mock-ups, they are the most realistic prototypes money can buy. We always get correct color and proper ink opacity, which is critical when printing on a transparent substrate.”

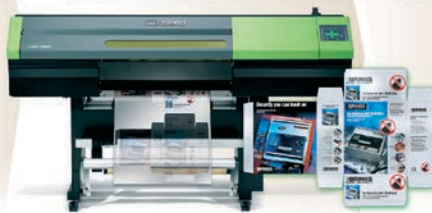
Marek Skrzynski, Director of Graphics and R&D, CSW

**1** Start with your art file and blank substrate

**2** The VersaUV will print, score and die cut your folding carton

**3** Pop out your prototype and assemble

**Folding carton prototypes in minutes, not hours.**



Watch videos on how to use the LEC to make your package prototypes  
[www.rolanddga.com/workflow](http://www.rolanddga.com/workflow)



**VERSAUV LEC-330**  
30" PRINTER/CUTTER



Watch what customers have to say about the LEC at  
[www.rolanddga.com/lec](http://www.rolanddga.com/lec)

**Roland®**





### Introducing Rapid Package Prototyping™

With all of the options available for finished packaging today, creating accurate proofs and prototypes has become more challenging than ever. Whether it's a box, a bag, a label or shrink wrap, your customers are looking for proof of concept before they go into production. The VersaUV lets you to create dynamic prototypes and custom short runs from start to finish. First, the advanced printing features allow you to simulate nearly any finished production process, including embossing and varnish effects. Secondly, by automatically creasing, contour cutting or perf-cutting virtually any shape or dieline with absolute precision, VersaUV eliminates the need for custom dies or time-consuming hand processes.

### An Unprecedented Range of Substrates

The VersaUV is a very capable pre-press and short-run printing device that can handle a vast array of press stock, including foils, BOPP, PE, PET film, clear and metallic stock for labels, decals, displays and posters. You can print directly onto synthetic and natural leathers, window coverings, fabrics and other interior décor items. The VersaUV can accommodate both roll-to-roll and sheet fed stock for the versatility to handle a wide range of printing applications and assignments.

### The World's Most Advanced UV Inks and Environmentally-friendly Curing System

Instant drying and flexible, Eco-UV® ink delivers high density and a wide color gamut. Choose from two formulations - original Eco-UV in CMYK, White and Clear, or Eco-UV S in CMYK and White for added flexibility. Both Eco-UV formulations allow prints to be stretched around curved surfaces and edges without cracking. Eco-UV S stretches up to 220 percent, ideal for printing on shrink sleeves and wraps and for thermo-forming applications.

The Automated Ink Circulation System prevents white pigments from settling in the ink lines for consistent density and reduced white ink waste. This circulation system dramatically lowers running costs while ensuring exceptional image quality throughout the longest production runs.

The UV-curing system uses safe, low heat lamps that last up to 10,000 hours - ten times longer than conventional UV lamps. LED lamps can also be turned on and off instantly for true on-demand operation, requiring no warm up time. The low heat UV LED lamps allow printing on heat-sensitive media such as shrink wrap, pressure sensitive media, and paper stocks, with no risk of damaging the substrate.

### Feel the Color with Roland Texture Library UV Clear Coat Effects

One of the most powerful features of the VersaUV is the ability to use Eco-UV Clear Coat to create a wide range of special effects, from overall matte or gloss finishes to stunning area highlights. By using the Roland Texture Library and laying down multiple layers of clear coat, you can simulate embossing and create a host of unique custom-textured effects, including water droplets, faux leather, crocodile skin...even Braille.

### Includes VersaWorks® RIP with Enhanced Productivity Tools

Based on Adobe® CPSI engine (3019), VersaWorks combines powerful features with an easy-to-use interface for outstanding results. Advanced print server functions allow you to manage up to four Roland inkjet devices simultaneously. VersaWorks supports the Roland Color system, which accurately reproduces more than 1,000 standard colors. A spot color replacement feature is included as well, allowing you to automatically replace a spot color with any option from within Roland Color without reopening the file in graphics editing software. VersaWorks also features built-in PANTONE® libraries which automatically convert specific PANTONE spot colors in your design file to a CMYK value.

### Perfect Color Matching From Proof to Press

For critical proofing applications, the VersaUV is compatible with popular color proofing software, including CGS ORIS Color Tuner, GMG Color Proof and FlexoProof/Dot Proof and EFI Color Proof XF and Fiery XF RIP.





© 2015 Nazdar. All Rights Reserved.  
Specifications subject to change without notice.